



AUTOMATIC DRIVER INSTALLATION

Overview

Persysistent includes the ability to automatically copy drivers to the computer once it is imaged. Then when sysprep runs, it will automatically install the correct drivers from the drivers copied. This applies to both the Client Build Screen as well as installing a base image using a task.

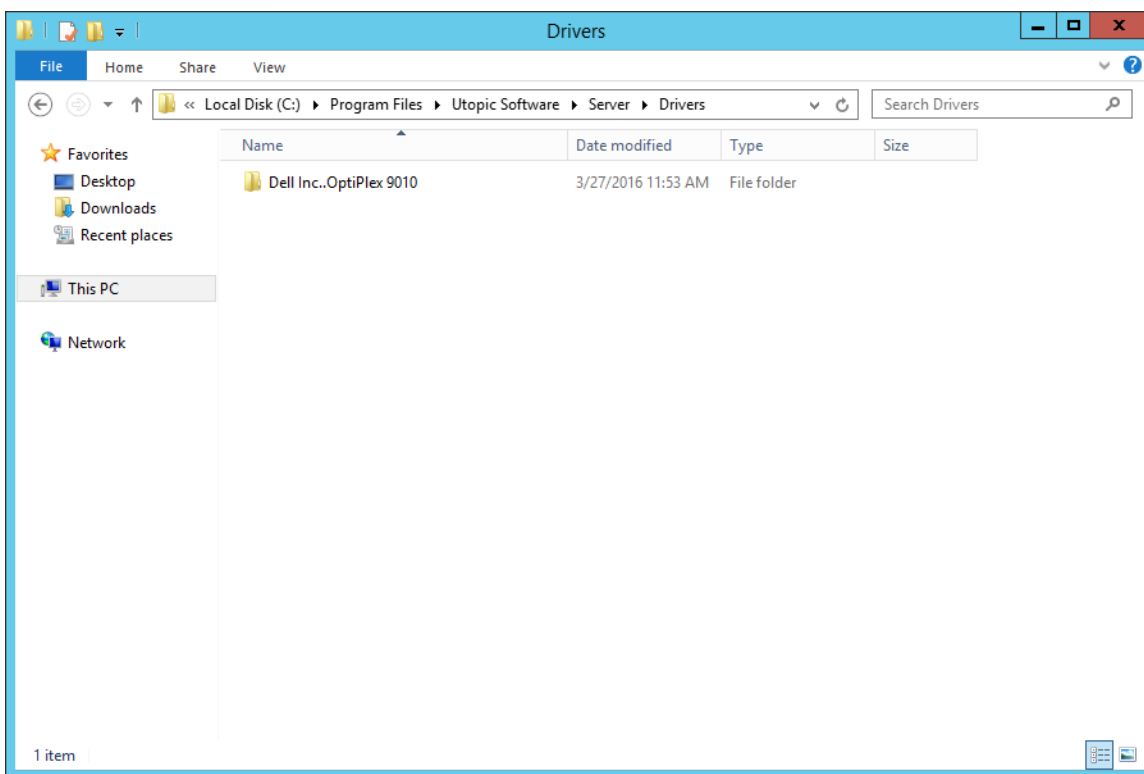
References

- Technical Brief- Deploying Base Image using Client Build Screen

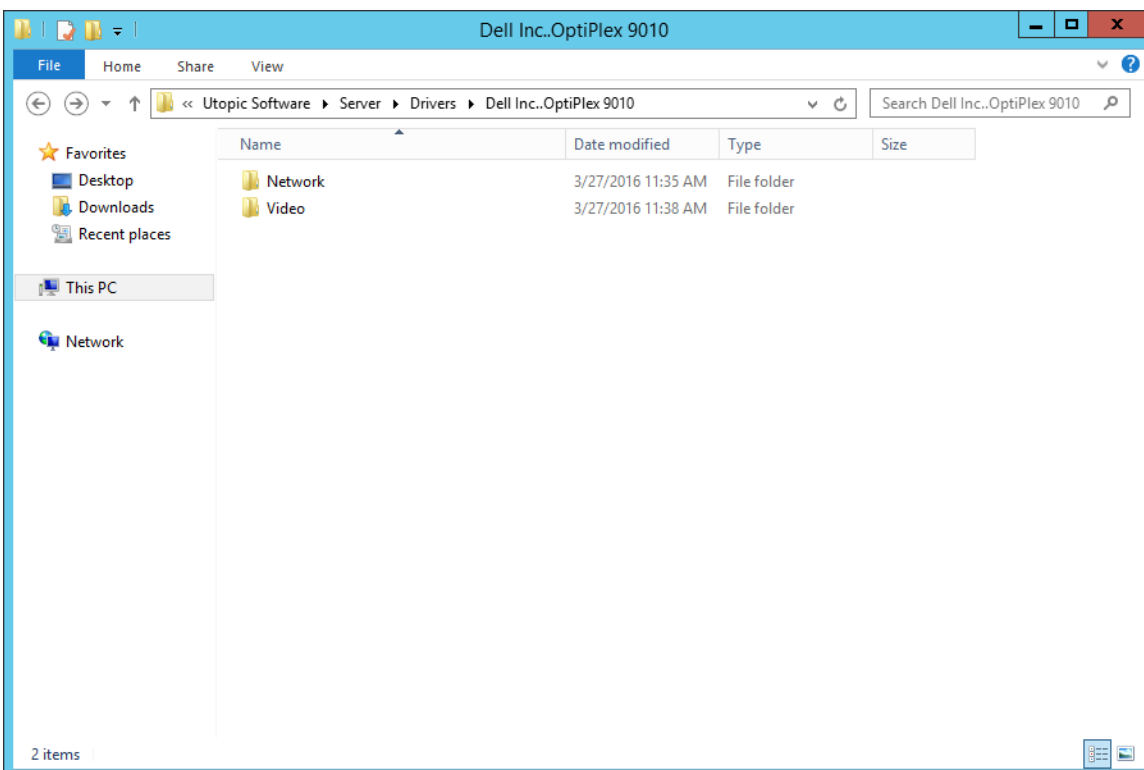
Automatic Driver Installation

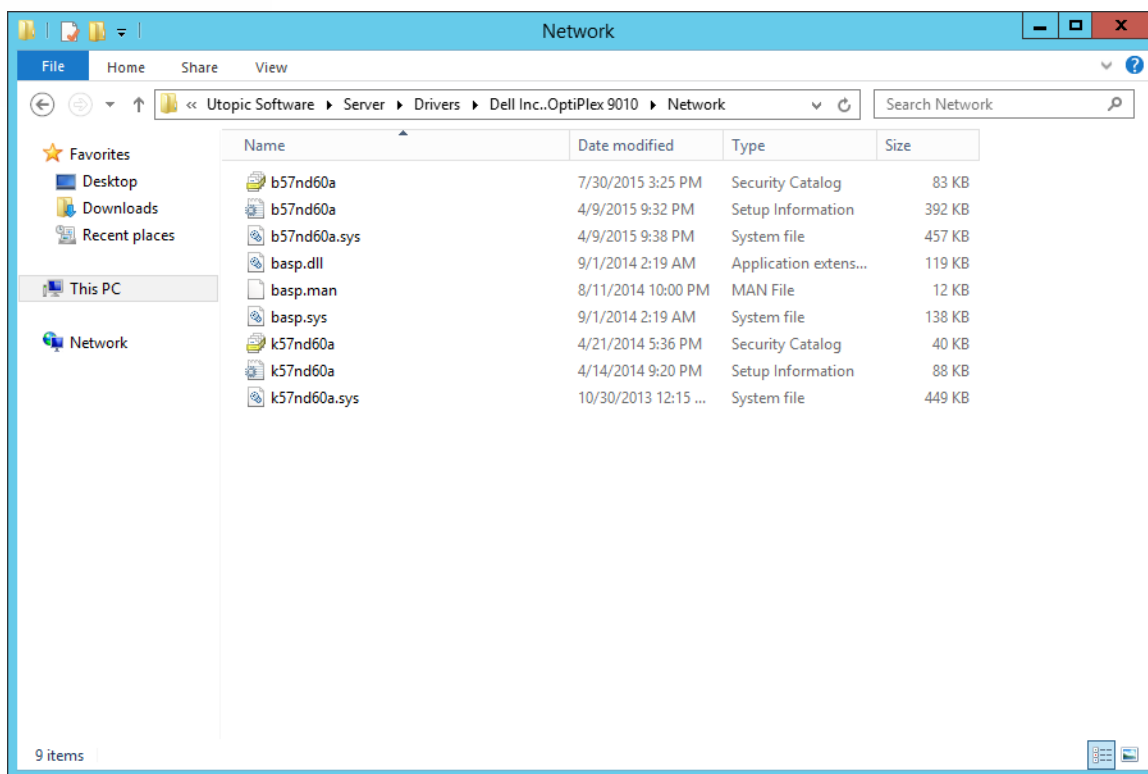
Setup

1. Find out the manufacture name and model of the computer. This information can be found by running the following command at a command prompt on the target computer:
wmic computersystem get model,manufacturer
2. Note the information.
3. On the Persysistent Server, navigate to C:\Program Files\Utopic Software\Server.
4. If necessary, create a folder called **Drivers**.
5. Create a directory called **<Manufacturer>.<Model>**
 - A. Example: C:\Program Files\Utopic Software\Server\Drivers\Dell Inc..Optiplex 9010



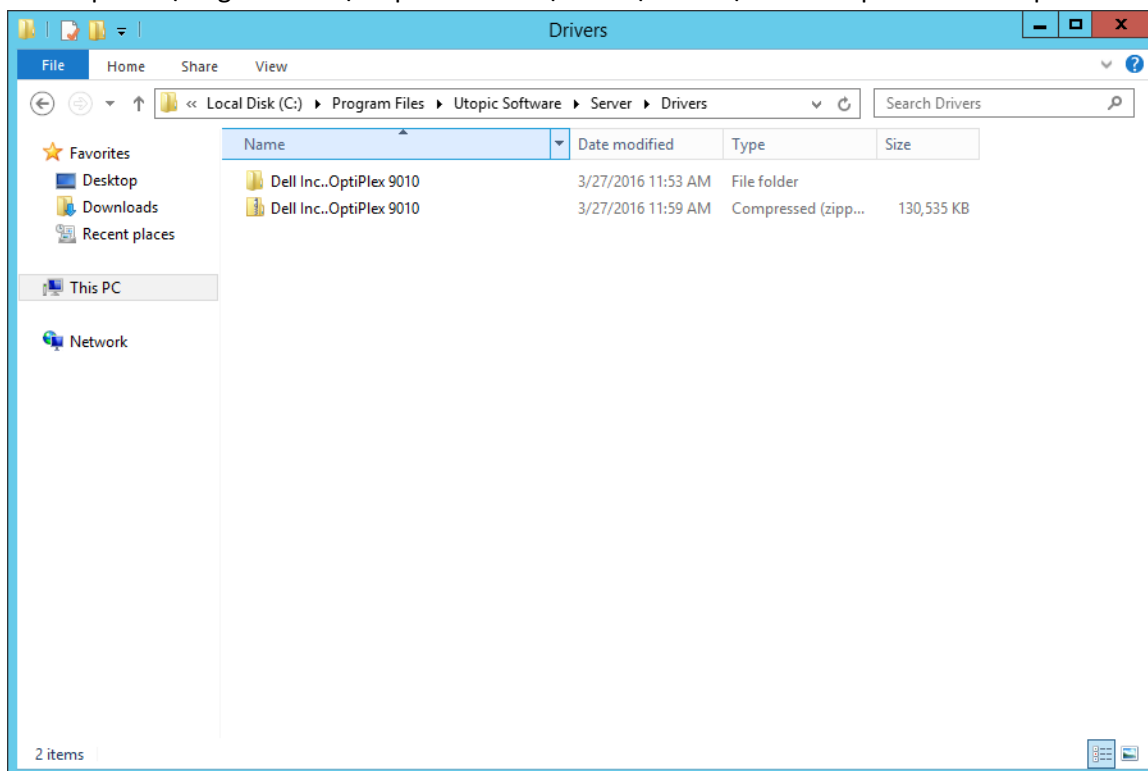
6. Copy all the drivers for that make and model in the above folder.





7. Zip the folder in the same location.

A. Example: C:\Program Files\Utopic Software\Server\Drivers\Dell Inc..OptiPlex 9010.zip



8. Now when a base image is installed using an action or client build screen it will download those drivers put them on the computer.
9. To update the drivers simply copy the updated drivers to the model specific folder and create zip file again. Any computers will pick up the new drivers when imaged.

Driver Packs

HP and Dell offer driver packs that contain all of the necessary drivers for various computer models. These driver packs are offered as exe or cab files. These files can be used with the automatic driver installation method mentioned above. Extract the cab or exe file to the computer model folder (step 6) and then follow the remaining steps.

- HP: http://ftp.hp.com/pub/caps-softpaq/cmit/HP_Driverpack_Matrix_x64.html
- Dell: <http://en.community.dell.com/techcenter/enterprise-client/w/wiki/2065>
- Lenovo: <https://support.lenovo.com/us/en/documents/ht074984>

UTOPIC

Utopic Software
1215 E 6th Avenue
Tampa, FL 33605

813.444.2231

support@utopicsoftware.com

Copyright © 2017 Utopic Software.

All rights reserved. Printed in the United States of America.

Information in this document is subject to change without notice. Persystent Software makes no warranties, express, implied, or statutory, as to the information in this document. This document contains proprietary information protected by copyright. No part of this document may be reproduced or transmitted in any form or by any means, electronic or mechanical, without written permission of Utopic Software, 1215 E 6th Avenue, Tampa, FL 33605, except as specified in the Product Warranty and License Terms.

Persystent® Suite logos are registered trademarks; Persystent Suite is a trademark of Persystent Software.

Microsoft, Windows Server 2012, Windows Server 2008, Windows Server 2003, Windows XP, Windows Vista, Windows 7, Windows 8/8.1, Active Directory, SQL Server, SQL Express, and .NET are either registered trademarks or trademarks of Microsoft Corporation in the United States and/or other countries.

All other registered trademarks and service marks mentioned are the property of their respective owners.

