



# CONFIGURING WSUS INTEROPERATION

## Overview

This document details how to configure Group Policy settings related to Windows Update in order to have correct operation with Persysistent Suite.

## Requirements

- WSUS 3.0 SP1, 3.0 SP2, 4.0
- Client computer: Microsoft .NET Framework 3.5
- Client computer: Unique SusClientIdregistry value

## Enabling WSUS

To enable WSUS integration, the WSUS policy needs to be enabled in the Pre-Boot policy. To do this:

1. Launch the WebUI web console.
2. Log into the web console.
3. In the left navigation pane under **Policy** select **Pre-Boot**.
4. In the **Available Pre-Boot Policies** select the policy that you wish to use with WSUS.
5. In the **Windows Update & SMS/SCCM** section, locate the **Patch Services** dropdown box. Select **WSUS** from the list.
6. Click **Save**.

### Windows Update & SMS/SCCM

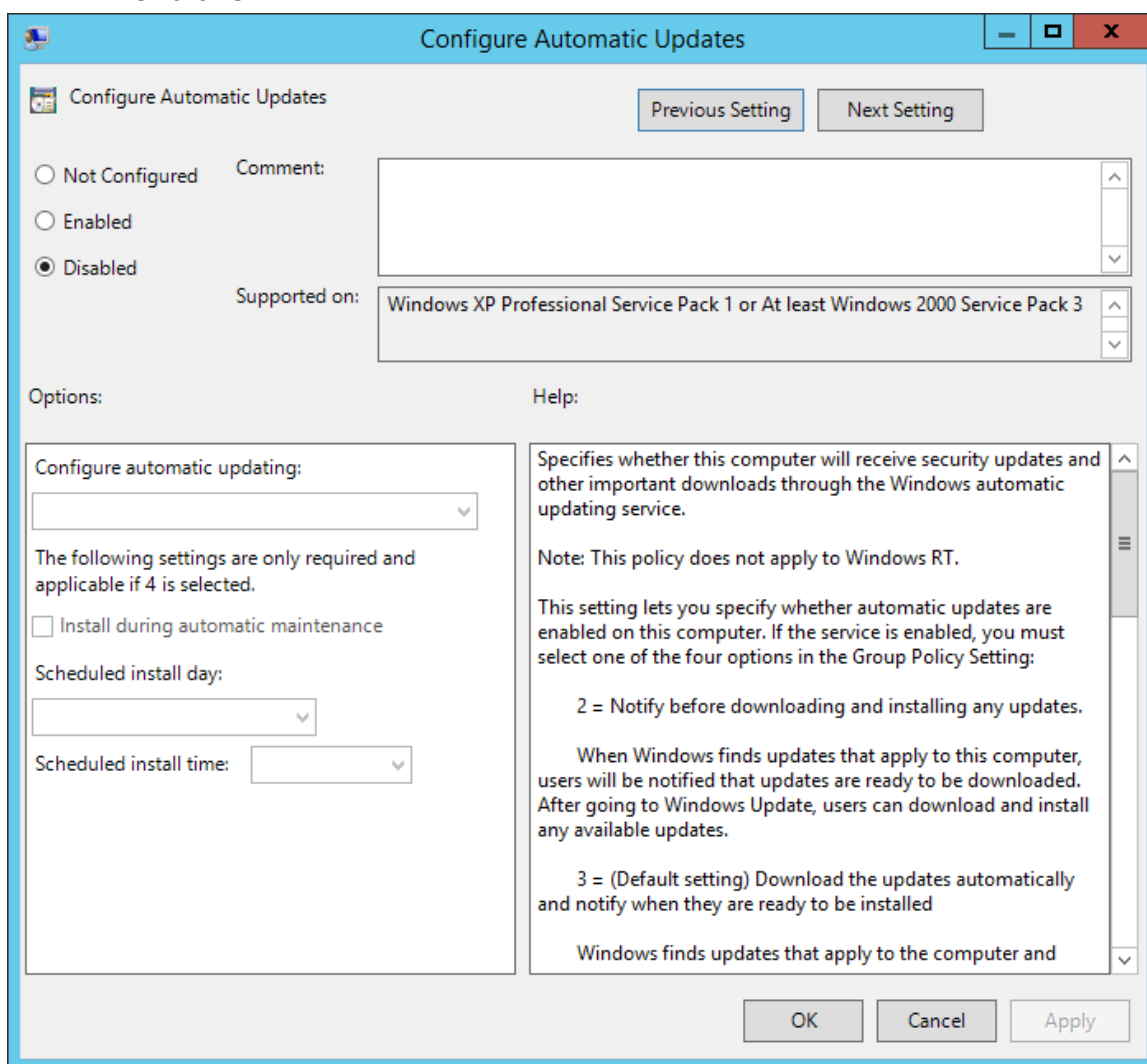
Patch Services:	WSUS	Restart options after updates:	Force Restart (Snooze Option)
Patch Services CleanUp Task:	Patch Services Cleanup	Patch Services Capture Task:	Patch Services Capture
WSUS Check For Update On:	Schedule Time Only	WSUS Schedule Days:	Everyday
WSUS Schedule Time:	3 AM		



## Configuring Group Policy for WSUS

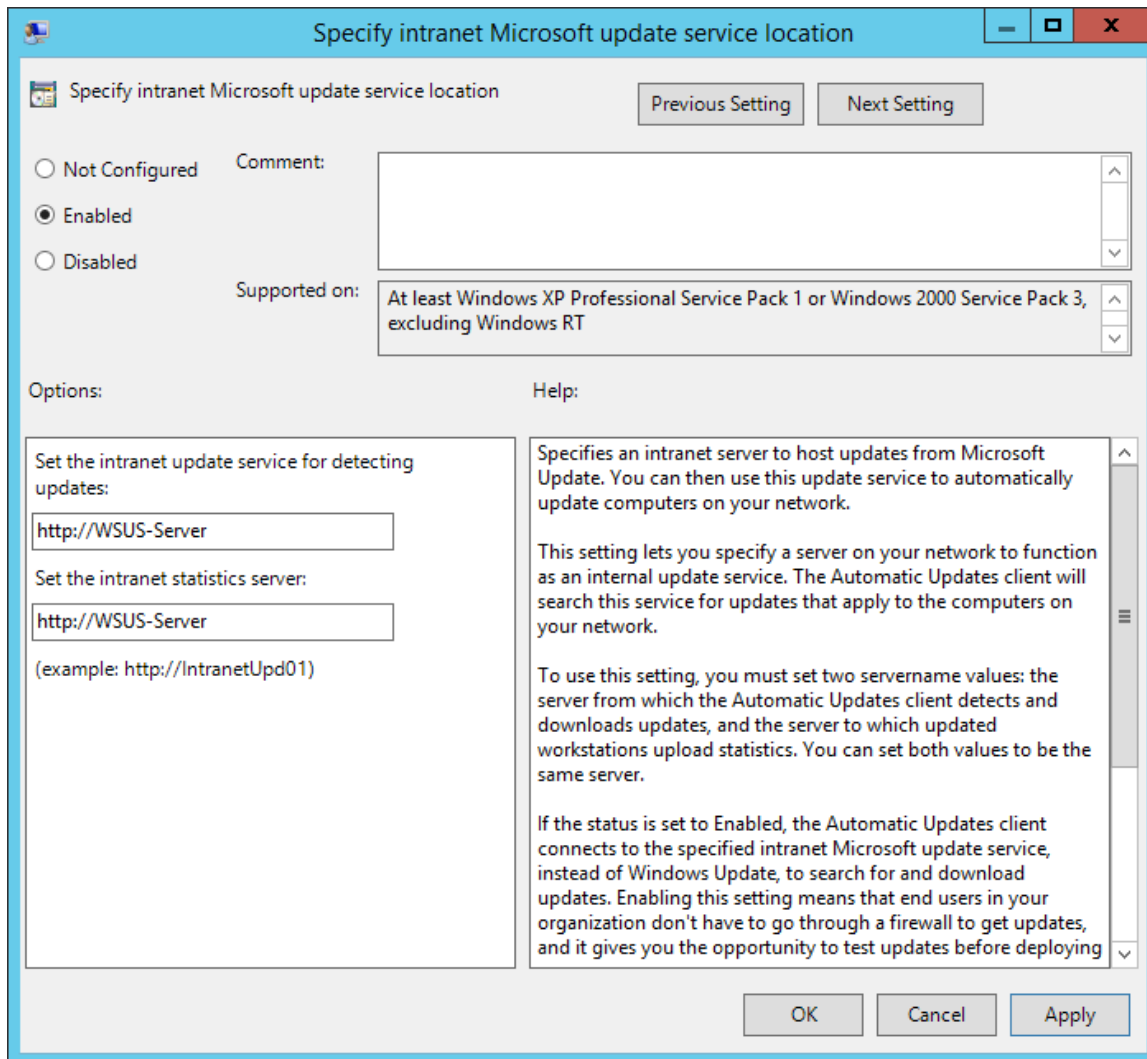
The procedure to configure Group Policy for WSUS is as follows:

1. Configure a Group Policy Object (GPO) which is linked to an organizational unit that contains Persysent clients. (The best practice is to create a GPO that only contains settings for WSUS).
2. Open the **Group Policy Management Editor** for the WSUS GPO. In the left pane, expand **Computer Configuration | Policies | Administrative Templates | Windows Components | Windows Update**.
3. Double click **Configure Automatic Updates**. The Properties dialog box appears.
4. In the dialog box:
  - A. Select **Disabled**.
  - B. Then click **OK**.



5. Double click **Specify intranet Microsoft update service location**. The Properties dialog box appears.
6. In the dialog box:
  - A. Select **Enabled**.

- B. In the **Set the intranet update service for detecting updates** box and the **Set the intranet statistics server** box, type the URL of the same WSUS server in both boxes, and then click **OK**.
- C. For example: `http://servername` or `https://servername` is the name of your WSUS server. In the example shown, `WSUS-Server` is the server name.



**Specify intranet Microsoft update service location**

Specify intranet Microsoft update service location Previous Setting Next Setting

Not Configured    Comment:   
 Enabled  
 Disabled

Supported on:

Options: Help:

Set the intranet update service for detecting updates:

Set the intranet statistics server:

(example: `http://IntranetUpd01`)

Specifies an intranet server to host updates from Microsoft Update. You can then use this update service to automatically update computers on your network.

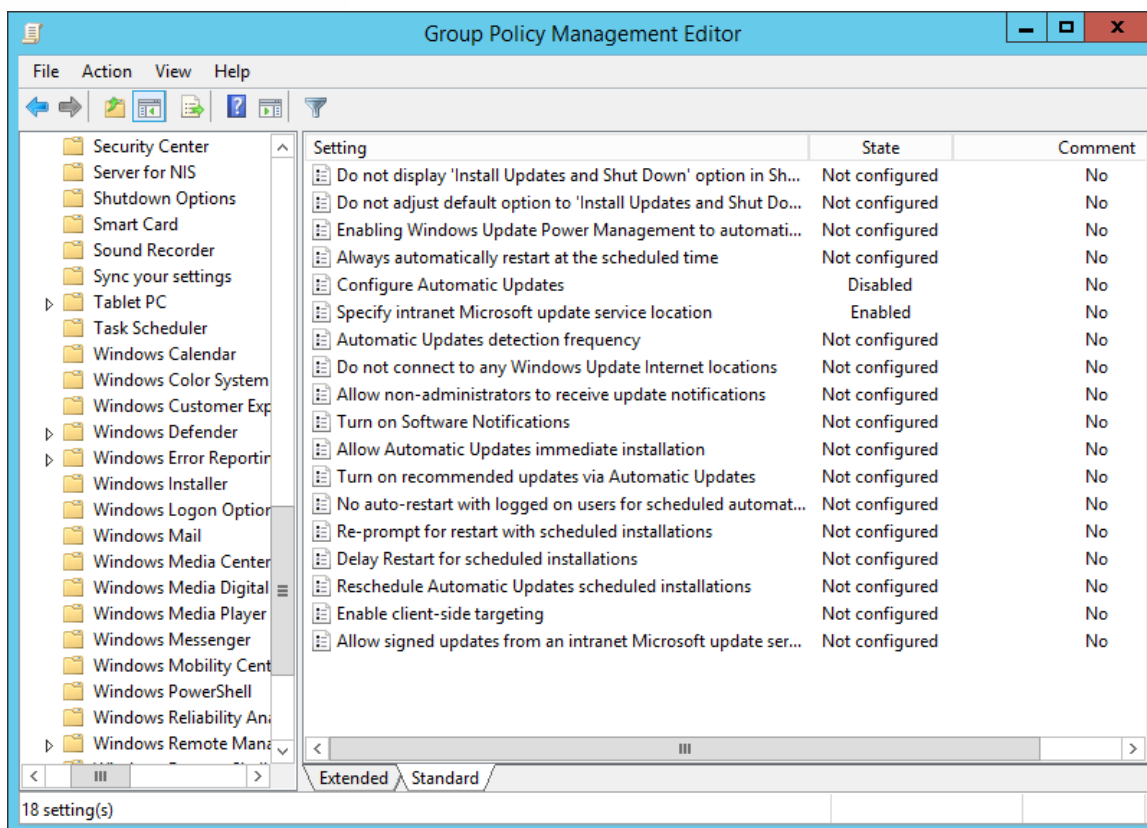
This setting lets you specify a server on your network to function as an internal update service. The Automatic Updates client will search this service for updates that apply to the computers on your network.

To use this setting, you must set two servername values: the server from which the Automatic Updates client detects and downloads updates, and the server to which updated workstations upload statistics. You can set both values to be the same server.

If the status is set to Enabled, the Automatic Updates client connects to the specified intranet Microsoft update service, instead of Windows Update, to search for and download updates. Enabling this setting means that end users in your organization don't have to go through a firewall to get updates, and it gives you the opportunity to test updates before deploying

OK Cancel Apply

7. Under the **State** column heading, all Settings should be **Not configured** except for: **Configure Automatic Updates (Disabled)** and **Specify intranet Microsoft update service location (Enabled)**.



8. Exit the editor.

**NOTE** If WSUS is selected in the **Patch Services** list and your Active Directory or Local Computer Policy does not provide a service location in the **Specify intranet Microsoft update service location** dialog box (Not Configured or Disabled), automatic updates will run and use [www.update.microsoft.com](http://www.update.microsoft.com) as the service location.

## Additional Information

- A Windows XP-based computer that was set up by using a Windows 2000 or Windows XP image does not appear in the Windows Server Update Services (WSUS) console  
<http://support.microsoft.com/kb/903262>

## Best Practices with Windows Server Update Services

<http://technet.microsoft.com/en-us/library/cc720525%28v=ws.10%29.aspx>

## Configure Automatic Updates by Using Group Policy

<http://technet.microsoft.com/en-us/library/cc720539%28WS.10%29.aspx>

## UTOPIC

**Utopic Software**  
**1215 E 6th Avenue**  
**Tampa, FL 33605**

813.444.2231

[support@utopicsoftware.com](mailto:support@utopicsoftware.com)

**Copyright © 2017 Utopic Software.**

All rights reserved. Printed in the United States of America.

Information in this document is subject to change without notice. Persysent Software makes no warranties, express, implied, or statutory, as to the information in this document. This document contains proprietary information protected by copyright. No part of this document may be reproduced or transmitted in any form or by any means, electronic or mechanical, without written permission of Utopic Software, 1215 E 6<sup>th</sup> Avenue, Tampa, FL 33605, except as specified in the Product Warranty and License Terms.

Persysent<sup>®</sup> Suite logos are registered trademarks; Persysent Suite is a trademark of Persysent Software.

Microsoft, Windows Server 2012, Windows Server 2008, Windows Server 2003, Windows XP, Windows Vista, Windows 7, Windows 8/8.1, Active Directory, SQL Server, SQL Express, and .NET are either registered trademarks or trademarks of Microsoft Corporation in the United States and/or other countries.

All other registered trademarks and service marks mentioned are the property of their respective owners.

