



DEPLOY BASE IMAGE: CLIENT BUILD SCREEN

Planning Process

It is important to understand up front all the steps that will occur in the preparation and deployment of an image. Take the time to be aware of some of the concepts and planning decisions so that the actual process goes smoothly.

Here are the requirements for using the Client Build Screen to deploy a base image:

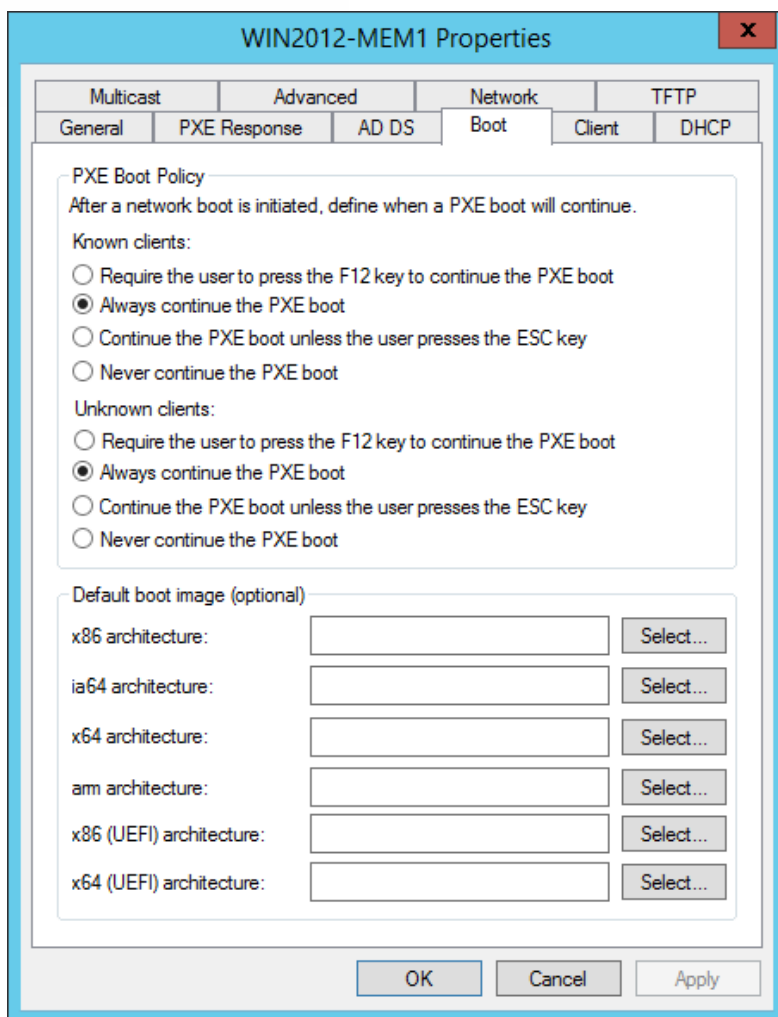
- A base image has been captured.
- Create all necessary computer groups on the Persysistent Web Console
- Create necessary Client Build Tasks which will be used as part of the build process.
- Boot image and Windows Deployment Services have been setup and configured.
- Ensure the computer's MAC Address is not entered anywhere in the Web Console.

Configuring Windows Deployment Services

Windows Deployment Services should be configured to answer all computers (known and unknown) for PXE boot. To perform this:

1. Launch Windows Deployment Services.
2. In the left pane expand **Servers** and right click on the desired server and select **Properties**.
3. Select the **Boot** tab.
4. Check the option **Always continue the PXE boot** for **Known clients** and **Unknown clients**.





5. Click **Apply** then **OK**.
6. Now the Persistent Server is configured for Client Build Screen using PXE boot.

Automatic Driver Installation

Persistent includes the ability to automatically copy drivers to the computer once it is imaged. Then when sysprep runs, it will automatically install the correct drivers from the drivers copied. This applies to both the Client Build Screen as well as installing a base image using a task. To add drivers to Persistent Server:

1. Find out the manufacture name and model of the computer. This information can be found by running the following command at a command prompt on the target computer:
wmic computersystem get model,manufacturer
2. Note the information.
3. On the Persistent Server, navigate to C:\Program Files\Utopic Software\Server.
4. If necessary, create a folder called **Drivers**.

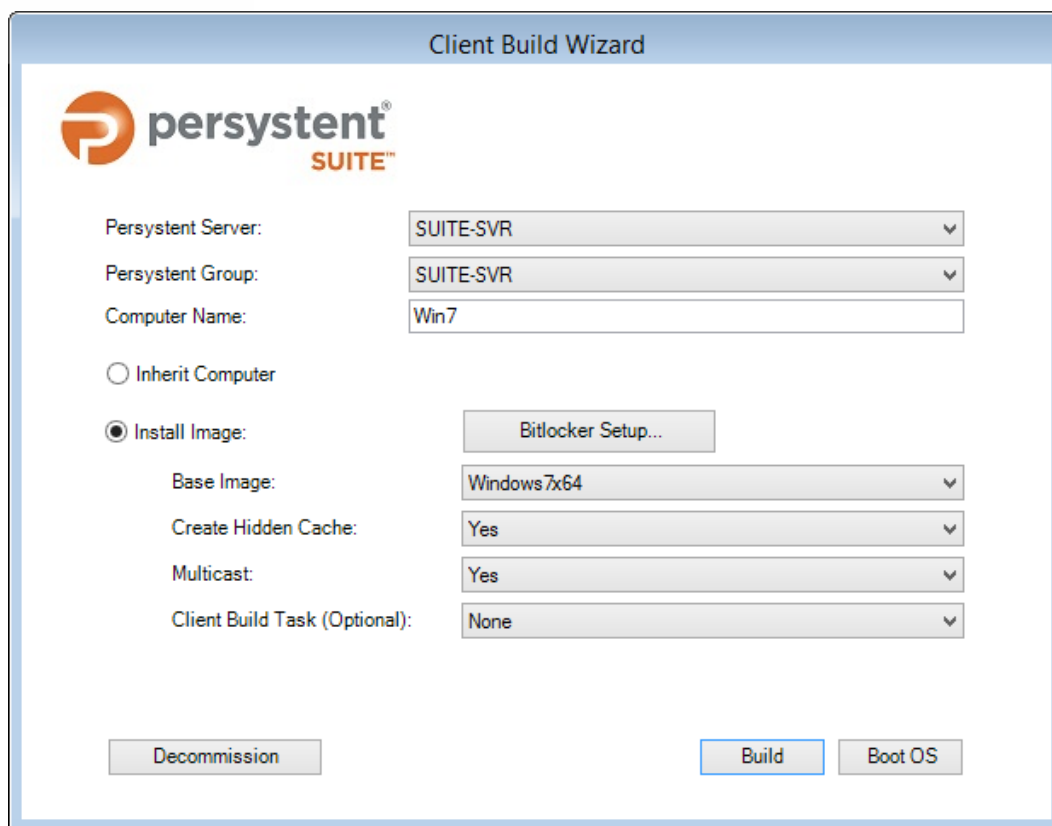
5. Create a directory called **<Manufacturer>.<Model>**
 - A. Example: C:\Program Files\Utopic Software\Server\Drivers\Dell Inc..Precision M4600
6. Copy all the drivers for that make and model in the above folder.
7. Zip the folder in the same location.
 - A. Example: C:\Program Files\Utopic Software\Server\Drivers\Dell Inc..Precision M4600.zip
8. Now when a base image is installed using an action or client build screen it will download those drivers put them on the computer.

To update the drivers simply copy the updated drivers to the model specific folder and create zip file again. Any computers will pick up the new drivers when imaged.

Client Build Screen

The computer can now boot into the Client Build Screen by booting via PXE. Follow these steps to deploy an image:

1. PXE boot the computer to be imaged.
2. Computer will now boot into the pre-boot environment and will prompt you to login.
3. Enter the username and password that you use to log into Persysent Web Console.
4. The **Client Build Wizard** screen is shown and **Install Image** is selected by default. On this screen the following information can be provided:
 - A. Persysent Server – Select the Persysent Server that this computer will report to.
 - B. Persysent Group – Select the Persysent Group that this computer belongs to.
 - C. Computer Name – Enter the name to assign to this computer.
 - D. Base Image – The image that is being deployed.
 - E. Create Hidden Cache – If Yes is selected, it will create a hidden cache partition which will enable the repair functionality. If No is selected, it will install the image on the computer, but it will not create hidden cache partition and you will not be able to use repair functionality.
 - F. Multicast – This option provides the ability to deploy an image to multiple computer simultaneously. If multiple computers are being imaged, use this option so that the base image is transferred once over the network rather than multiple times.
 - G. Client Build Task (Optional) – If a Client Build Task has been created it can be selected here. This task will be executed once the base image has been installed on the computer. This allows you to automate your imaging process.



NOTE If using BitLocker, please refer to the “Technical Brief- BitLocker” document.

5. Click **Build**.
6. The selected base image is now being installed on the computer. Once the base image is installed successfully then it will be added to Persysent Web Console automatically. At this point, the build process is complete and the computer is ready to be managed through Persysent Web Console.

UTOPIC

Utopic Software
1215 E 6th Avenue
Tampa, FL 33605

813.444.2231

support@utopicsoftware.com

Copyright © 2017 Utopic Software.

All rights reserved. Printed in the United States of America.

Information in this document is subject to change without notice. Persysent Software makes no warranties, express, implied, or statutory, as to the information in this document. This document contains proprietary information protected by copyright. No part of this document may be reproduced or transmitted in any form or by any means, electronic or mechanical, without written permission of Utopic Software, 1215 E 6th Avenue, Tampa, FL 33605, except as specified in the Product Warranty and License Terms.

Persysent[®] Suite logos are registered trademarks; Persysent Suite is a trademark of Persysent Software.

Microsoft, Windows Server 2012, Windows Server 2008, Windows Server 2003, Windows XP, Windows Vista, Windows 7, Windows 8/8.1, Active Directory, SQL Server, SQL Express, and .NET are either registered trademarks or trademarks of Microsoft Corporation in the United States and/or other countries.

All other registered trademarks and service marks mentioned are the property of their respective owners.

